

# BATU535

‘Comfortable,  
Elegant and  
Practical,’

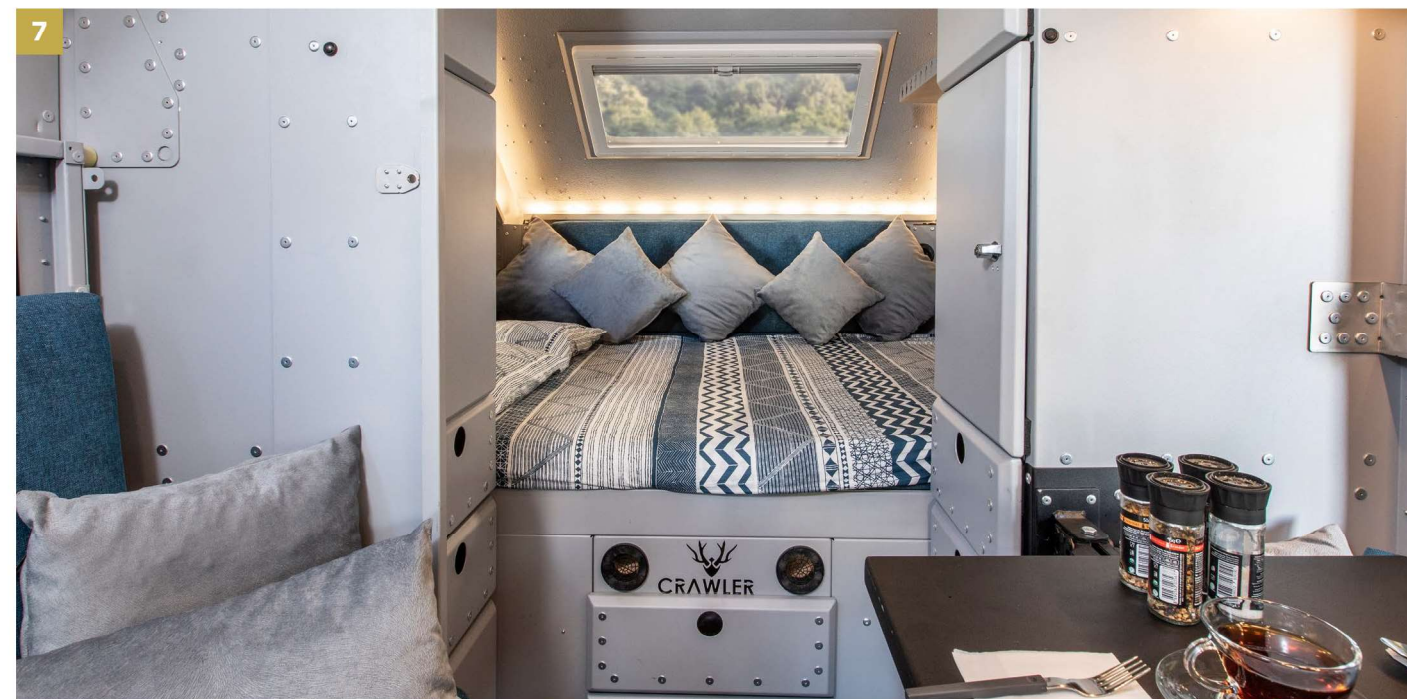
**BATU535**, the family  
sized version of  
discovery.

With its spacious living space  
and unique features, add your  
journey a different dimension.





- 1 Accessible Bathroom Design from inside and outside.  
Foldable sink, Cassette Toilet, Chrome Faucet, Showerhead
- 2 Accessible Kitchen designs inside and outside.  
Three Burner Stove, Faucet, Chrome Kitchen Countertop, Chrome Kitchen Sink
- 3 Side Opening Pop-up
- 4 Coupling and Stabilizer that has Brake and Rear Maneuverability
- 5 **C.D.S.** - **CRAWLER** Dynamic Suspension, perfect fit with all road conditions
- 6 Chrome Barbecue and Wide Awning Tent
- 7 It offers you home comfort with Wide Bed Area, 2-Person Bunk Bed, and Foldable Table





## standard features

### Exterior Design

Windows with Flyscreen and Curtain  
Toilet/Bathroom External Door  
Was Rear LED Lights with Sequential Indicators  
Was Side Marker Lamps  
Was Rear Marker Lamps  
License Plate Lighting Lamp  
Outside Strip Lighting Leds  
Outside Storage Cabinets  
Outside Storage Cabinets Lighting  
Chrome Cylinder Locks  
Chrome Cabinet Hinges  
Chrome Cabinet Door Stoppers  
Side Opening Pop-up Lid  
Rear Opening Pop-up Lid  
Fixing Stands with Adjustable Height (4 Pcs)

### Interior Design

Electrostatic Powder Coating (Cabinet and Interior Walls)  
Carpet Covering Over PVC Coating Floor  
Ceramic Based Insulation Coating  
Inside Storage Cabinets  
Safe Lockers and Door Type Organizers  
Safe  
Chrome Cylinder Storage Locks  
Cabinet Doors Fixing Pistons

### Electric / Electronic / Control System

Crawler Smart Panel and Control Box  
Victron Energy 220A Gel Battery  
Victron Blue Smart Charger (20 Amper)  
Defa 220v Charger Input, Cable and Bag  
Lighting Dimmers  
USB Outlets  
12v Power Outlet  
Bed Area Power Outlets  
Interior Lighting Leds  
13 PIN Socket (For Only Europe)

### Water System

Water Pump (19 Lt/Min)  
Chrome Water Filler Cap  
Chrome Fresh Water Tank (136 Lt)  
Chrome Grey Water Tank (45 Lt)  
Black Water Tank (17 Lt)  
Water Drain Valve

### Kitchen Area

Fixed Chrome Kitchen Countertop  
Kitchen Drawers  
Kitchen Cabinets (Under Countertop)  
Kitchen Cabinets (Countertop)  
Three Burner Stove and Pot Holder  
Chrome Kitchen Sink  
Hot/Cold Water Faucets  
152 Lt Thetford Refrigerator (Or Similar)

### Sitting and Sleeping Area

4 Person Seating Area  
Seat and Back Cushions  
Foldable Bunk Bed System  
Adjustable Swivel Table  
Secondary Bed Area (2-Person Bunk Bed&Sofa)  
(180 x 70 cm)

### Bedroom

Sliding Door with Flyscreen and Curtain  
Primary Bed Area (205 x 165 cm)  
Wardrobe  
Storage Drawers  
Storage Cabinets

### Bathroom / Toilet

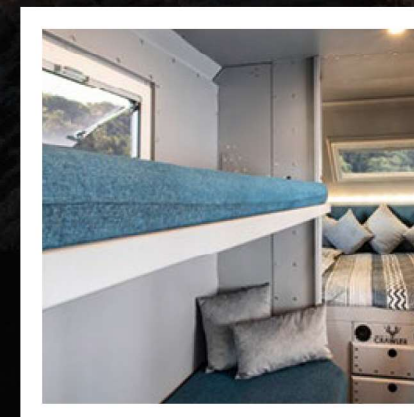
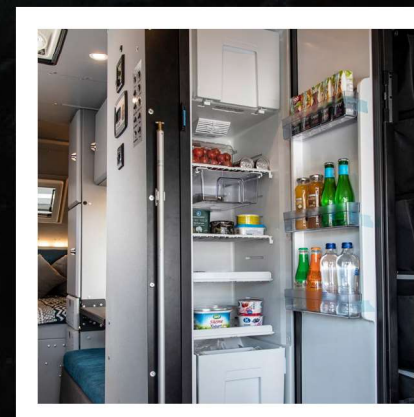
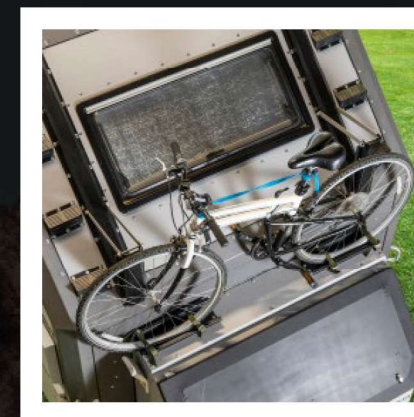
Aluminium External Door  
Aluminium Internal Door  
Compact Laminate Flooring  
Restroom / Bathroom Exhaust Fan  
Thetford Cassette Toilet (Or Similar)  
Foldable Shower Sink  
Shower Head with Hot / Cold Water Faucet

### Heating / Cooling / Gas

Truma Combi 6 (Air and Water Heater System)  
Heater Outlet from 4 Points  
Truma Duo Switch  
Truma LPG Anti-Freeze System  
Truma Double Gas Valve  
Truma Crash Sensor  
Gas Filter  
Gas Regulator  
Gas Detector  
Copper Gas System 8mm  
Ceiling Hek Glass with In/Out Ventilation

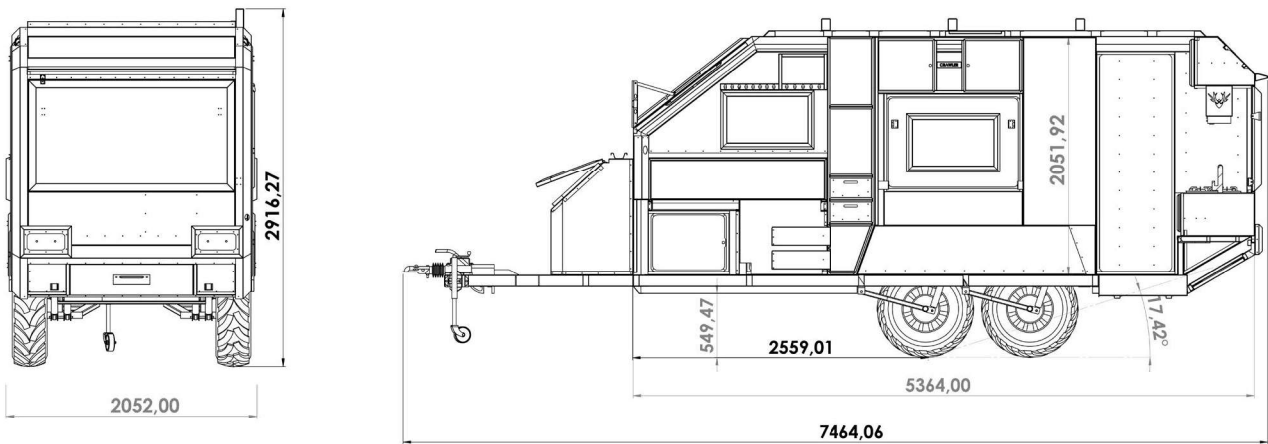
## optional features

Adjustable Dynamic Air Suspension  
Truma Mover xt4 (Mobility Without A Towing Vehicle)  
Rear Light Protector (Black)  
Thule 4 Meters Awning Tent (Mouse Grey)  
Thule Electrical Step  
Come Up Winch (12000Lb)  
Fishing Holder  
Gun Holder  
Victron Energy 220 Ah Battery (Extra)  
Schmid Solar Panel 325W & Sterling Charge Regulator  
Solara Solar Panel 160w & Solara Regulator  
Neta Portable Satellite  
Water Anti Freeze System  
Truma Gas Outlet For BBQ Grill  
Truma Aventa Compact Plus Ceiling Type Air Conditioner





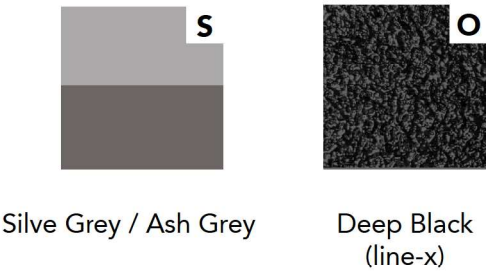
technical specifications



**Length:** 735 cm  
**Width:** 205 cm  
**Weight:** Approx. 1730kg with Standard Equipment  
**Body:** Aluminium  
**Chassis:** Electro Galvanized Coating  
**Suspension:** Independent Suspension with Double Shock Absorbers, Double Axles  
**Swing:** Cataphoresis Coated Swings (For Only Scandinavia)  
**Axle and Wheel:** Double axle, four wheel  
**Wheel/Tyre Size:** 285.75.16 Rim: 6x139.7  
**Coupling and Stabiliser:** Winterhoff WS3000 (Brake and Rear Maneuverability)

exterior colors

standard: S / optional: O



interior seatings

