



20 years in Turkey in 2017 with 100% domestic production in Gümüşgroup within and European off-road established CRAWLER order to meet the caravan needs, Kocaeli 4 in climate in the factory in Kartepe, and can be used in all environments, land caravans, motorhomes, military / manufactures superstructures and trailers in industrial areas. Each of the produced vehicles is of high-quality standards. At the same time, it continues to work within the framework of continuous improvement to produce more environmentally friendly, more compact and safer vehicles with its R&D studies. Turkey is living in the honors of being the first and only company producing land caravan.

Crawler, which plans to expand its product range in the sector, aims to increase its users in civil, public and military areas in the domestic market, while continuing its export operations with 25 distributors in 18 countries.

OTAG⁶⁰⁰

‘Set your own
boundaries,’

Feel the comfort and
power together.

OTAG⁶⁰⁰ that is implementable to 4x4 and 6x6 was designed for your long-term camps.



- 1 ATV & Bicycle Holder
- 2 Outdoor kitchen area & gas outlet for BBQ Grill
- 3 Outward-opening window
- 4 LED tail lights
- 5 Front hydraulic winch
- 6 Hydraulic folding terrace that can be accessed both from inside and outside





- 7** Bathroom comfort with cassette toilet, shower cabin, foldable shower sink, hot / cold water faucet that brings your home comfort into nature.
- 8** Large refrigerator for the freshness of your food and drink
- 9** Burner stoves and triplex oven, chrome kitchen countertop, wide kitchen drawers and cabinet
- 10** Study area with study desk, storage cabinets, foldable chairs
- 11** Electrically height adjustable aluminum table that provides both sitting and sleeping area
- 12** Wide - functional kitchen and 4 person seating area
- 13** Spacious bedroom with 195x 115 cm sized bed , wardrobe , seat storage cabinets and outward-opening window



standard features

Exterior Design

Windows with Flyscreen and Curtain
Toilet/Bathroom External Door
Was Rear LED Lights with Sequential Indicators
Was Side Marker Lamps
Was Rear Marker Lamps
Rear Rectangle Reflector
Yellow Reflector
License Plate Lighting Lamp
Outside Lighting Leds
Outside Storage Cabinets
Outside Storage Cabinets Lighting
Chrome Cylinder Locks
Chrome Cabinet Hinges
Chrome Cabinet Door Stoppers
Side Pop-up Cover

Outdoor Kitchen Area

Sliding Outdoor Kitchen
Double Stoves
Faucet
Truma Gas Outlet For BBQ Grill (Or Similar)
Plastic Sinks

Interior Design

Electrostatic Powder Coating (Cabinet and Interior Walls)
Compact Laminate Flooring
Ceramic Based Insulation Coating
Inside Storage Cabinets
Cabinet Locked Handles
Cabinet Doors Fixing Pistons
Fabric Hanging Pockets

Electric / Electronic / Control System

Crawler Smart Panel and Control Box
Schmid Solar Panel 380w
600 w Inverter
Victron Energy 220A AGM Battery (2 Pcs.)
Victron Blue Smart Charger (20 Amper)
Defa 220v Charger Input, Cable and Bag
Lighting Dimmers
USB Outlets
12v Power Outlet
Lighting Leds
Car Electrical Charging System (Cyrix)

Water System

Water Pump (19 Lt/Min)
Water Filler Jack
Chrome Fresh Water Tank (496 Lt)
Chrome Grey Water Tank (126 Lt)
Black Water Tank (17 Lt)
Water Drain Valve

Kitchen Area

Chrome Kitchen Countertop
Kitchen Drawers
Kitchen Cabinets (Under Countertop)
Kitchen Cabinets (Countertop)
Thetford 3 Burner Stoves and Triplex Oven
Fixed Chrome Kitchen Sink
Hot/Cold Water Faucets
152 Lt Thetford Refrigerator (Or Similar)

Sitting and Sleeping Area

4 Person Seating Area
Seat and Back Cushions
Under Seat Storage Cabinets
Height Adjustable Aluminum Table
24 Inch Smart TV
Side Opening Travel Cover Locks
Secondary Bed Area(195 x 115 cm)

Study Area

Study Desk
Storage Drawers (Under Desk)
Storage Cabinets (Desk Top)
Foldable Chair

Bedroom

Primary Bed Area (195 x 155 cm)
Wardrobe
Storage Drawers
Storage Cabinets

Bathroom / Toilet

Foldable Bathroom Door
Compact Laminate Flooring
Thetford Cassette Toilet (Or Similar)
Foldable Shower Sink
Chrome Hot / Cold Water Faucet
Shower Head with Hot / Cold Water Faucet

Heating / Cooling / Gas / Fuel System

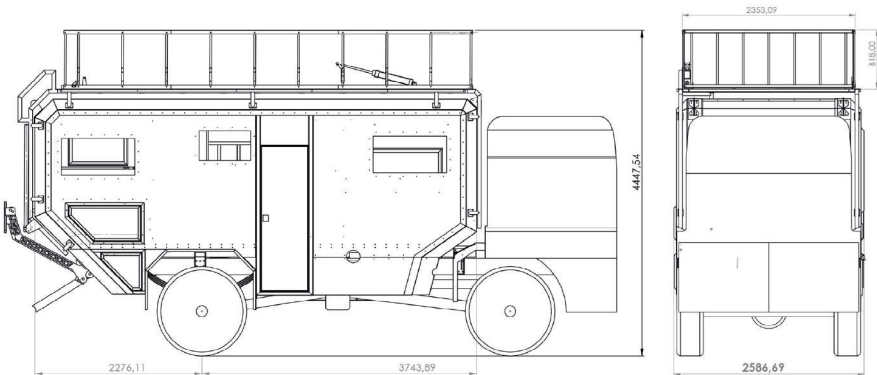
Truma Combi 6 (Air and Water Heater System)
Heater Outlet from 6 Points
Truma Duo Switch
Truma LPG Anti-Freeze System
Truma Double Gas Valve
Truma Crash Sensor
Gas Filter
Gas Regulator
Gas Detector
Copper Gas System 8mm
Ceiling Hek Glass with In/Out Ventilation (2 Pcs.)

optional features

Rear Atv / Utv Carrier & Lift
Rear Light Protector (Black)
Roll Bar
Automatic Roof Terrace & Roll Bar
Thule Tent 3 Meters
Front Hydraulic Land Crane (15 Ton) (Excluding hydraulic system)
Bunk bed (Smaller wardrobe)
Office Area (Inc. table, wider wardrobe)
Fishing Holder
Gun Holder
Victron Energy 220 Ah Battery (Extra)
Schmid Solar Panel 325W & Sterling Charge Regulator
Solara Solar Panel 160w & Solara Regulator
Neta Portable Satellite
Water Anti Freeze System
Dometic Microwave MWO 240
Truma Aventa Compact Plus Ceiling Type Air Conditioner



technical specifications



Cabinet Length : 6000mm
Cabinet Width : 2500mm
Cabinet Height : 2050mm
Cabin Weight: 3500 Kg (Standard Equipment)

exterior colors

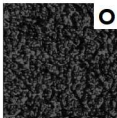
standard: S / optional: O



Ash Grey / Dark Grey



Silver Grey



Deep Black
(line-x)

interior seatings



Gravel Grey



Mint Green



Ocean Blue



Forest Green



Fog Grey



Dark Blue



Khaki Green



Carbon Black



Sand Beige



Ice Grey



CMP190

‘Freedom is the
inherent of it’

Take the road whenever
you wish. Live the
moment with **CMP190**.

Enjoy the exploring with
CMP190 that is designed for
the pick-up body part.



- 1 LED Kitchen Ambient Occlusion
- 2 Useful Outdoor Kitchen with Double Stoves, Chrome Faucet, Double Plastic Sinks
- 3 Internal Body Width and Extendable Sidewall Window
- 4 Retractable Ladder/Rear Door, Fixing Stands with Adjustable Height
- 5 Refrigerator and Kitchen Storage Cabinet
- 6 Expandable Pop-up Ceiling and 270 Degree Awning
- 7 Spacious interior body, high ceiling and 195x190 sized Bed



standard features

Exterior Design

Rear Entrance Cover
Retractable Ladder/Rear Door
Fixing Stands with Adjustable Height (2 Pcs)
Extendable Sidewall
Extendable Sidewall Window
Expandable Pop-up Roof System with Windows
Chrome Storage Locks
Chrome Door Stoppers
Chrome Hinges
Gas Bottle Holders (2Pcs)
Was Rear LED Lights
Storage Cabinets
Lightening of Kitchen Cabinets

Interior Design

Electrostatic Powder Coating (Cabinet and Interior Walls)
PVC Coating Floor
Ceramic Based Insulation Coating
Storage Lockers
Zipped Shelves
Rear Door Flyscreen
Foldable Internal Table
Rails for Upper Bed Area
Internal Window Curtain

Outdoor Kitchen Area

Sliding Outdoor Kitchen
Double Stoves
Faucet
Double Plastic Sinks
Stove Windshield
Kitchen Storage Cabinet

Sitting and Sleeping Area

3 Person Seating Area
Seat and Back Cushions
Under Seat Storage Cabinets
Primary Bed Area (195 x 190 cm)
Secondary Bed Area (165 x 60 cm)

Gas System

Stove Gas Hose
Gas Detector

Water System

Water Pump (19 Lt/Min)
Water Level Gauge
Chrome Fresh Water Tank (90 Lt)
Chrome Water Filler Cap
Water Drain Valve

Electric / Electronic / Control System

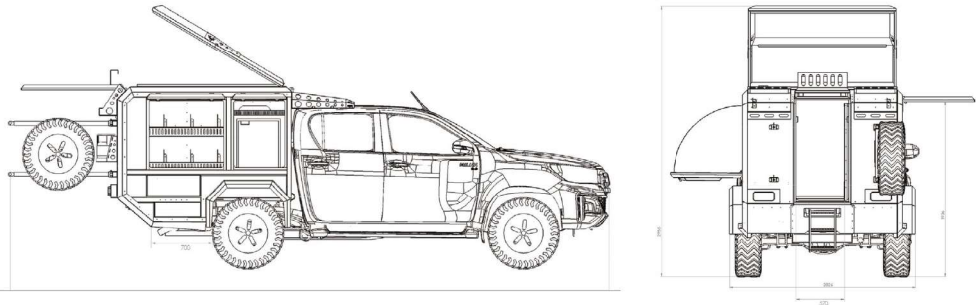
6 Buttons Analog Control Panel
Battery (40A)
Adjustable LED Internal Lighting with Remote Control
Pako Switch
Victron Blue Smart Charger (7 Amper)
Defa 220v Charger Input, Cable and Bag
USB Outlets
12v Power Outlet
Interior Lighting Leds
Car Electrical Charging System (Cyrx)

optional features

Spare Tyre Holder & External Shower Area
Rear Light Protector (Black)
270 Degree Premium Tent (Mouse Grey)
Fishing Holder
Gun Holder
Thetford Porta Potti 565P Wc
Victron Energy 220 Ah Battery (Price Difference)
Schmid Solar Panel 325W & Sterling Charge Regulator
Solara Solar Panel 160w & Solara Regulator
Crawler Smart Panel
Neta Portable Satellite
Water Anti Freeze System
Indel B Cruise 65 Refrigerator
Dometic CoolMatic Crx 65 Refrigerator
Engel Ck 57 Refrigerator
Eberspacher D2 Airtronic Heater (Diesel)
Eberspacher B3 Airtronic Heater (Gasoline)
Imkar Air Conditioner (Only Cooler)



technical specifications



Length: 190 cm
Width: 170 cm
Height: 130 cm (Pop-up Close), 240 cm (Pop-up Open)
Weight: Approx. 450 kg (Minus Your Existing Box Which is Typically About 200kg)
Body: Aluminium

exterior colors

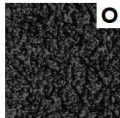
standard: S / optional: O



Dark Grey



Ash Grey



Deep Black
(line-x)

interior seatings



Dark Blue



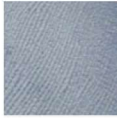
Khaki Green



Carbon Black



Sand Beige



Ice Grey

